

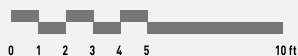
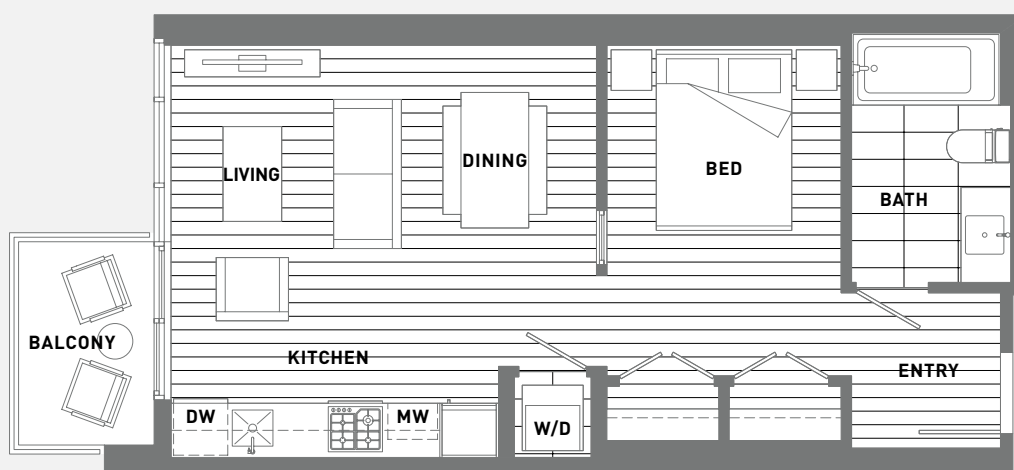
# PLAN A

STUDIO

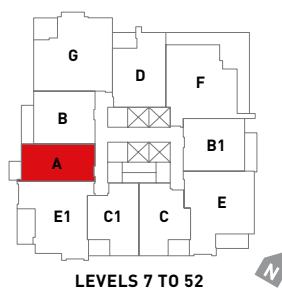
# 4670

ASSEMBLY WAY

STATION  
SQUARE



INTERIOR	513 SQ FT
EXTERIOR	38 SQ FT
<b>TOTAL</b>	<b>551 SQ FT</b>



The developer reserves the right to make changes and modifications to the information contained herein. Floor plans, layout and finishes are subject to change without notice.

This is not an offering for sale as an offering can only be made after the filing of a disclosure statement, and only in jurisdictions where qualified in accordance with applicable local laws. E. & O. E.

## FLOORPLAN LAYOUTS

CLIENT: Anthem Properties  
PROJECT: Station Square Phase 2  
TODAY'S DATE: March 10, 2014  
SIZE: 8.5" X 11"

CMYK

# PLAN B

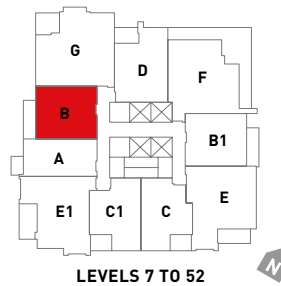
1 BEDROOM

# 4670

ASSEMBLY WAY



INTERIOR	605 SQ FT
EXTERIOR	82 SQ FT
<b>TOTAL</b>	<b>687 SQ FT</b>



The developer reserves the right to make changes and modifications to the information contained herein. Floor plans, layout and finishes are subject to change without notice.

This is not an offering for sale as an offering can only be made after the filing of a disclosure statement, and only in jurisdictions where qualified in accordance with applicable local laws. E. & O. E.

## FLOORPLAN LAYOUTS

CLIENT: Anthem Properties  
 PROJECT: Station Square Phase 2  
 TODAY'S DATE: March 10, 2014  
 SIZE: 8.5" X 11"



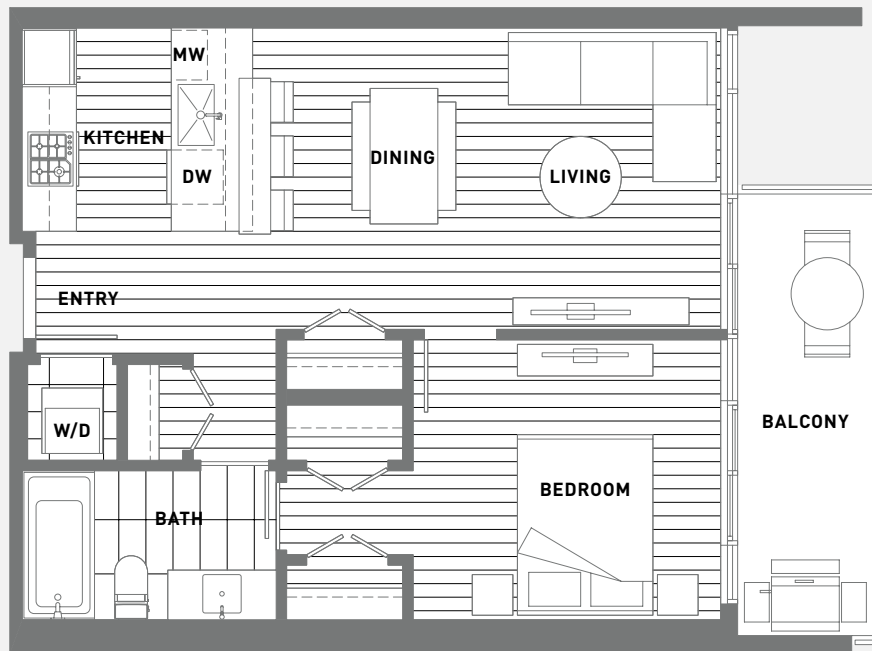
# PLAN B1

1 BEDROOM

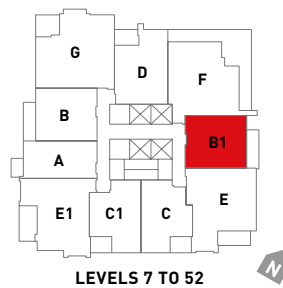
# 4670

ASSEMBLY WAY

STATION  
SQUARE



INTERIOR	605 SQ FT
EXTERIOR	81 SQ FT
TOTAL	686 SQ FT



The developer reserves the right to make changes and modifications to the information contained herein. Floor plans, layout and finishes are subject to change without notice.

This is not an offering for sale as an offering can only be made after the filing of a disclosure statement, and only in jurisdictions where qualified in accordance with applicable local laws. E. & O. E.

## FLOORPLAN LAYOUTS

CLIENT: Anthem Properties  
PROJECT: Station Square Phase 2  
TODAY'S DATE: March 10, 2014  
SIZE: 8.5" X 11"

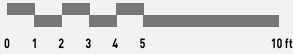
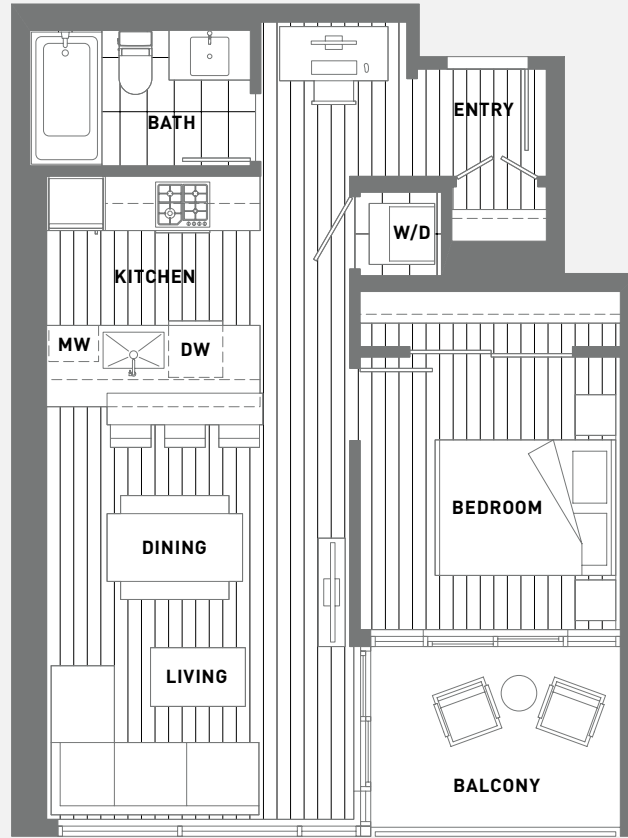
CMYK

# PLAN C

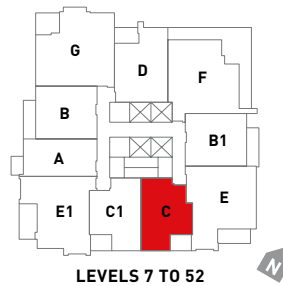
1 BEDROOM

# 4670

ASSEMBLY WAY



INTERIOR	587 SQ FT
EXTERIOR	61 SQ FT
<b>TOTAL</b>	<b>648 SQ FT</b>



The developer reserves the right to make changes and modifications to the information contained herein. Floor plans, layout and finishes are subject to change without notice.

This is not an offering for sale as an offering can only be made after the filing of a disclosure statement, and only in jurisdictions where qualified in accordance with applicable local laws. E. & O. E.

**FLOORPLAN LAYOUTS**

CLIENT: Anthem Properties  
 PROJECT: Station Square Phase 2  
 TODAY'S DATE: March 10, 2014  
 SIZE: 8.5" X 11"



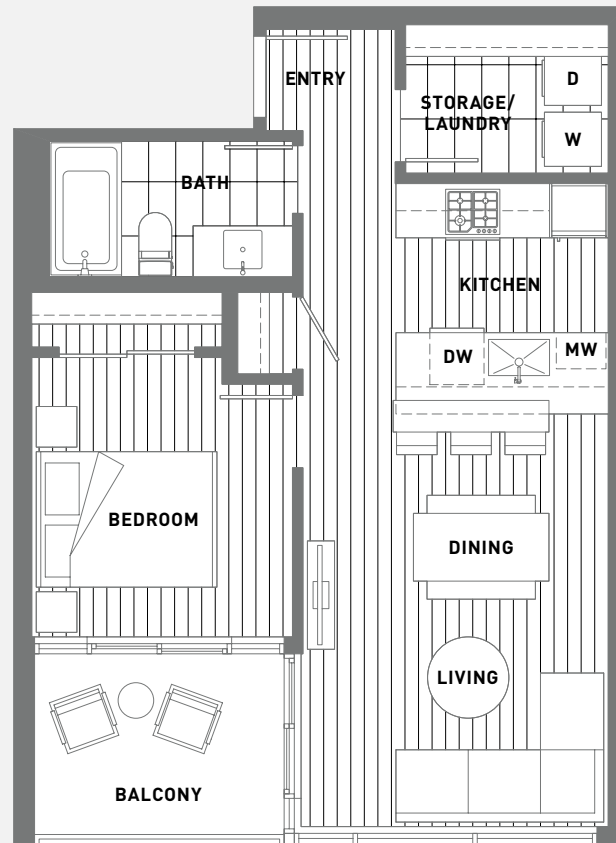
# PLAN C1

1 BEDROOM

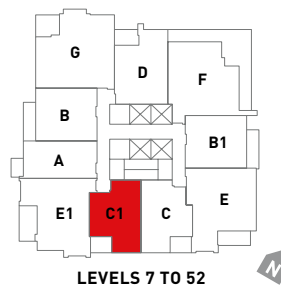
# 4670

ASSEMBLY WAY

STATION  
SQUARE



INTERIOR	583 SQ FT
EXTERIOR	61 SQ FT
<b>TOTAL</b>	<b>644 SQ FT</b>



LEVELS 7 TO 52

The developer reserves the right to make changes and modifications to the information contained herein. Floor plans, layout and finishes are subject to change without notice.

This is not an offering for sale as an offering can only be made after the filing of a disclosure statement, and only in jurisdictions where qualified in accordance with applicable local laws. E. & O. E.

## FLOORPLAN LAYOUTS

CLIENT: Anthem Properties  
 PROJECT: Station Square Phase 2  
 TODAY'S DATE: March 10, 2014  
 SIZE: 8.5" X 11"

CMYK

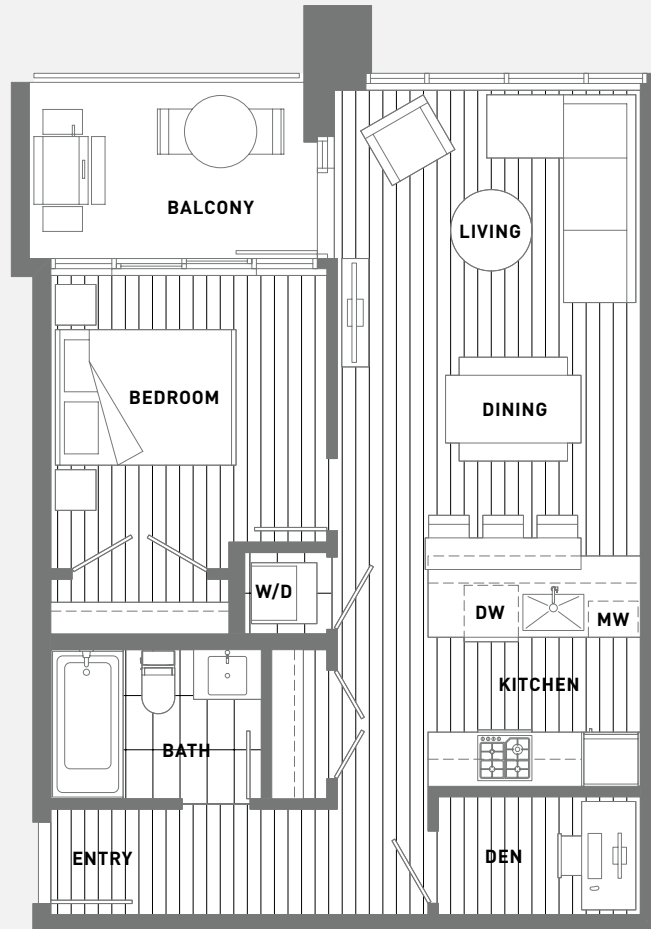
# PLAN D

1 BEDROOM + DEN

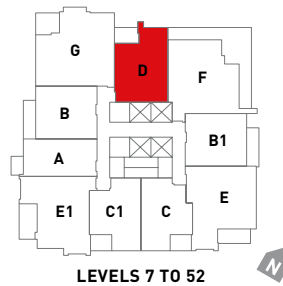
# 4670

ASSEMBLY WAY

STATION  
SQUARE



INTERIOR	663 SQ FT
EXTERIOR	68 SQ FT
TOTAL	731 SQ FT



LEVELS 7 TO 52

The developer reserves the right to make changes and modifications to the information contained herein. Floor plans, layout and finishes are subject to change without notice.

This is not an offering for sale as an offering can only be made after the filing of a disclosure statement, and only in jurisdictions where qualified in accordance with applicable local laws. E. & O. E.

## FLOORPLAN LAYOUTS

CLIENT: Anthem Properties  
PROJECT: Station Square Phase 2  
TODAY'S DATE: March 10, 2014  
SIZE: 8.5" X 11"

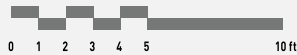
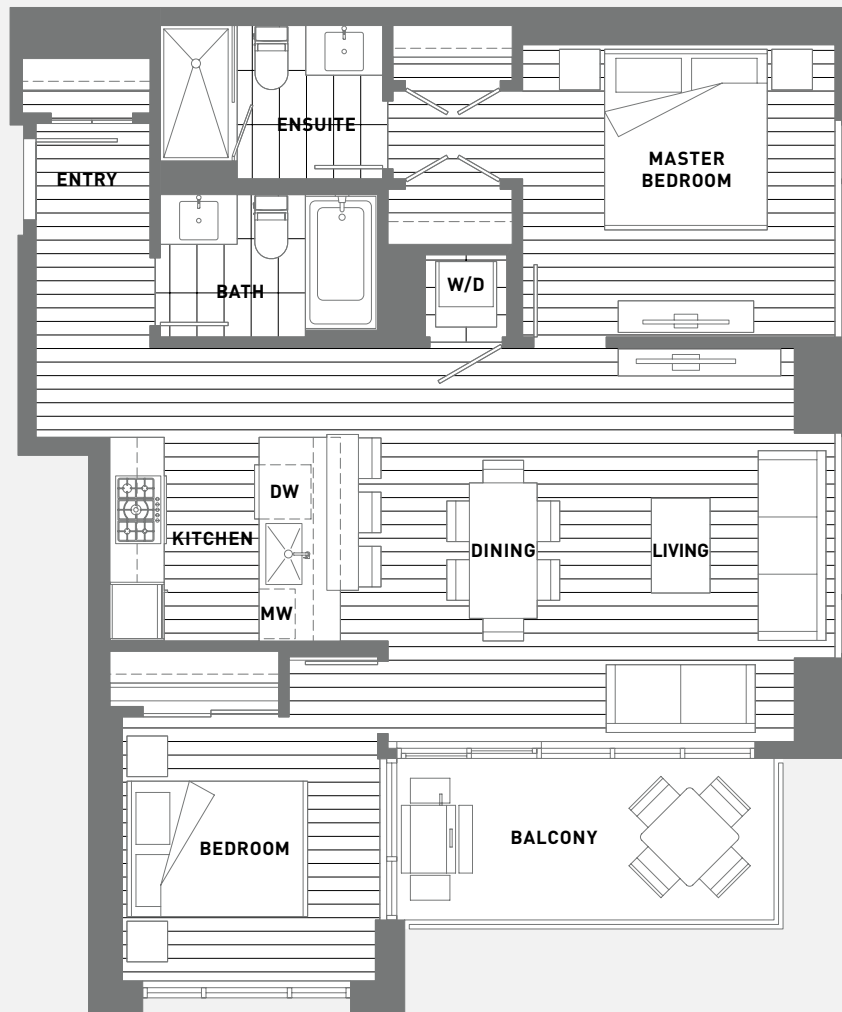
CMYK

# PLAN E

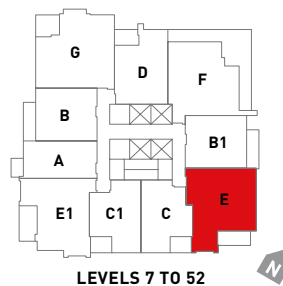
## 2 BEDROOM

# 4670

ASSEMBLY WAY



INTERIOR	885 SQ FT
EXTERIOR	93 SQ FT
<b>TOTAL</b>	<b>978 SQ FT</b>



The developer reserves the right to make changes and modifications to the information contained herein. Floor plans, layout and finishes are subject to change without notice.

This is not an offering for sale as an offering can only be made after the filing of a disclosure statement, and only in jurisdictions where qualified in accordance with applicable local laws. E. & O. E.

### FLOORPLAN LAYOUTS

CLIENT: Anthem Properties  
 PROJECT: Station Square Phase 2  
 TODAY'S DATE: March 10, 2014  
 SIZE: 8.5" X 11"



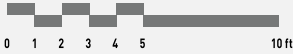
# PLAN E1

2 BEDROOM

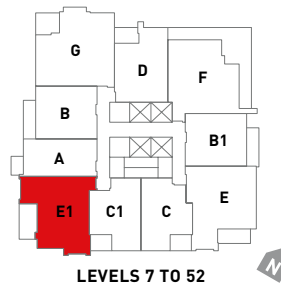
# 4670

ASSEMBLY WAY

STATION  
SQUARE



INTERIOR	825 SQ FT
EXTERIOR	110 SQ FT
TOTAL	935 SQ FT



LEVELS 7 TO 52

The developer reserves the right to make changes and modifications to the information contained herein. Floor plans, layout and finishes are subject to change without notice.

This is not an offering for sale as an offering can only be made after the filing of a disclosure statement, and only in jurisdictions where qualified in accordance with applicable local laws. E. & O. E.

## FLOORPLAN LAYOUTS

CLIENT: Anthem Properties  
PROJECT: Station Square Phase 2  
TODAY'S DATE: March 10, 2014  
SIZE: 8.5" X 11"

CMYK



# PLAN F

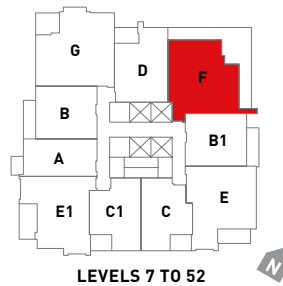
2 BEDROOM

# 4670

ASSEMBLY WAY



INTERIOR	915 SQ FT
EXTERIOR	403 SQ FT
<b>TOTAL</b>	<b>1318 SQ FT</b>



The developer reserves the right to make changes and modifications to the information contained herein. Floor plans, layout and finishes are subject to change without notice.

This is not an offering for sale as an offering can only be made after the filing of a disclosure statement, and only in jurisdictions where qualified in accordance with applicable local laws. E. & O. E.

**FLOORPLAN LAYOUTS**

CLIENT: Anthem Properties  
 PROJECT: Station Square Phase 2  
 TODAY'S DATE: March 10, 2014  
 SIZE: 8.5" X 11"



# PLAN G

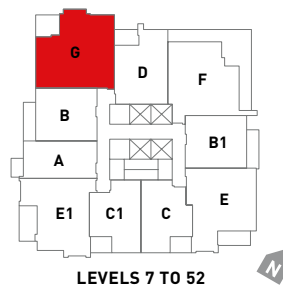
2 BEDROOM

# 4670

ASSEMBLY WAY



INTERIOR	995 SQ FT
EXTERIOR	89 SQ FT
<b>TOTAL</b>	<b>1084 SQ FT</b>



The developer reserves the right to make changes and modifications to the information contained herein. Floor plans, layout and finishes are subject to change without notice.

This is not an offering for sale as an offering can only be made after the filing of a disclosure statement, and only in jurisdictions where qualified in accordance with applicable local laws. E. & O. E.

**FLOORPLAN LAYOUTS**

CLIENT: Anthem Properties  
 PROJECT: Station Square Phase 2  
 TODAY'S DATE: March 10, 2014  
 SIZE: 8.5" X 11"

