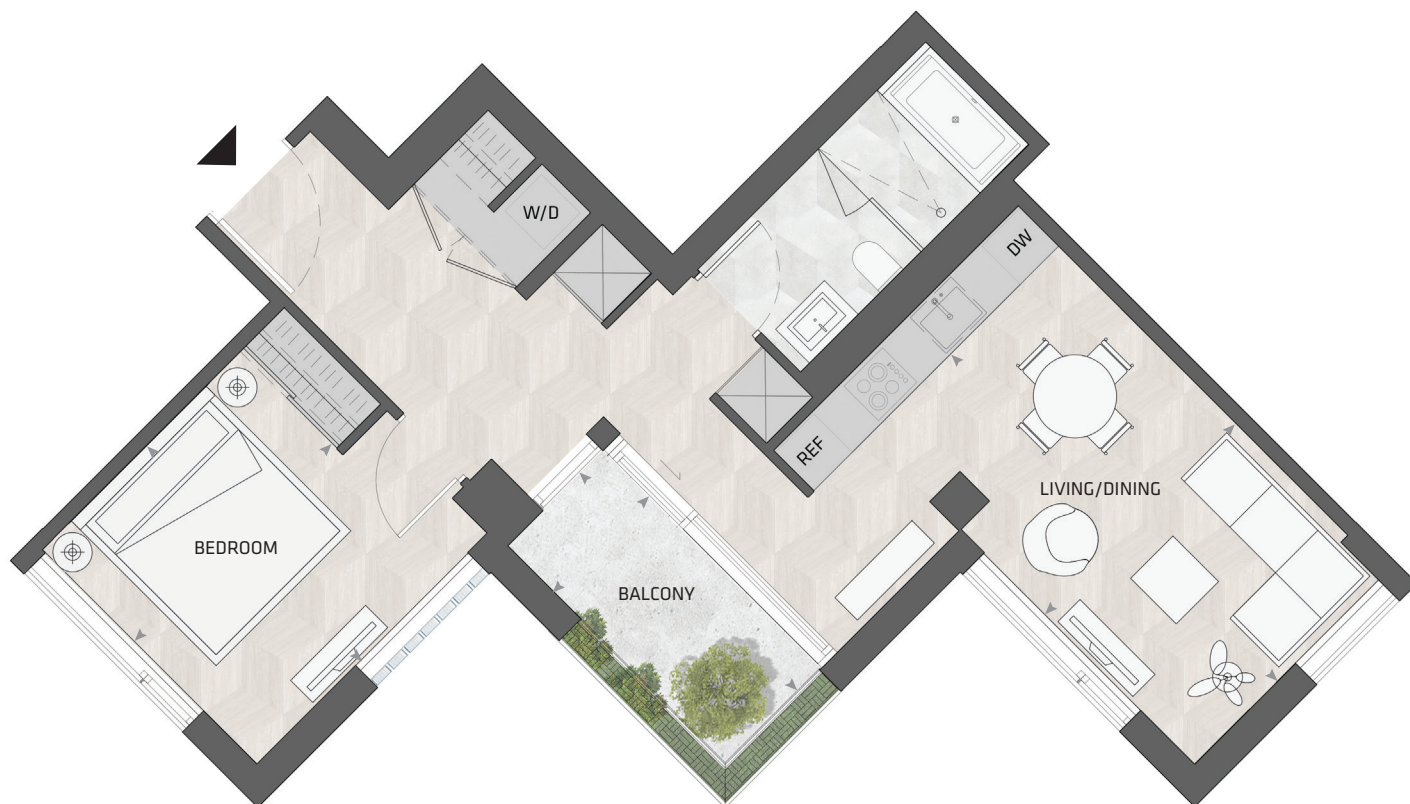


KING

HOME 501 W



1BD.91

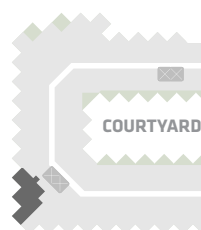
1 Bedroom
1 Bathroom

Total Living:
759 ft²

Interior Living:
687 ft²

Exterior Living:
72 ft²

LIVING/ DINING	9' 9" X 16' 8"
BEDROOM	10' 1" X 11' 0"
BALCONY	4' 11" X 11' 0"



WEST MOUNTAIN KEYPLAN

Custom B&B Furniture Package included with the purchase of studio and one bedroom homes in the West Mountain

All dimensions and specifications are approximate. Certain plans are reverse or mirror image. Balcony square footages are estimated and may vary from that stated. Please see Sales Representative for details. Furniture not included. Refer to key plan for unit location and orientation. E. & O.E.