

BORDEAUX

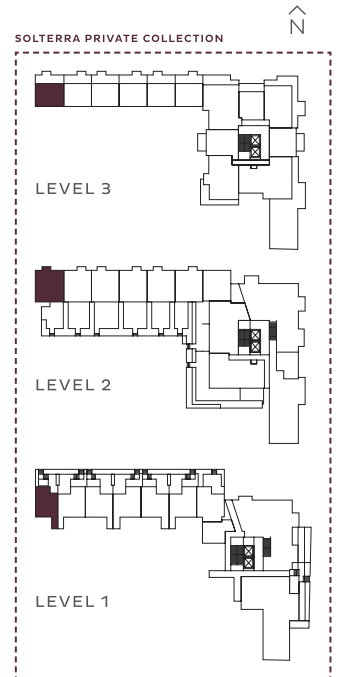
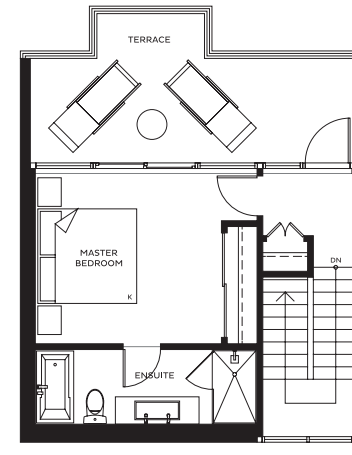
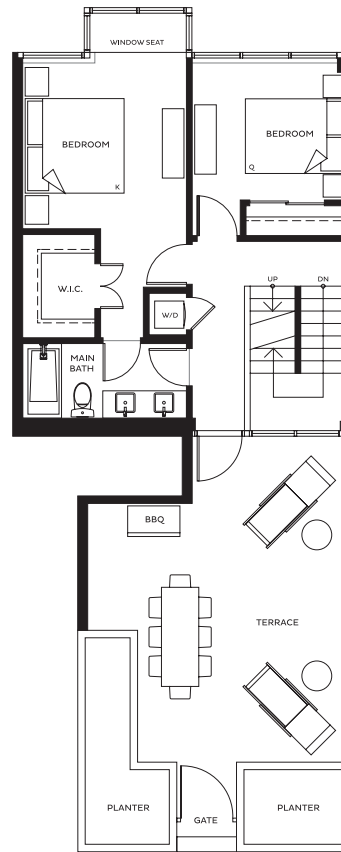
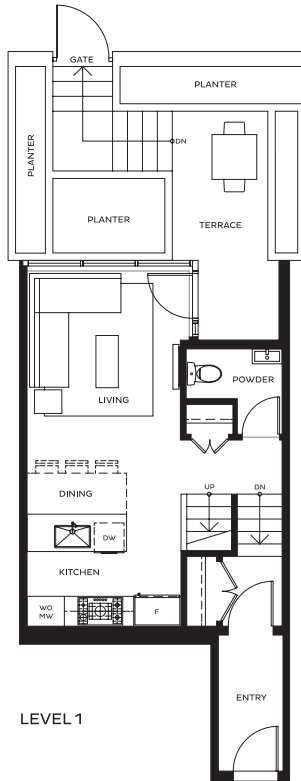
LUXURY LIVING

LACE SERIES

PLAN TH1

THREE BEDROOM, TWO AND A HALF BATH

INDOOR 1,527 SQFT
 OUTDOOR 608 SQFT
 TOTAL 2,135 SQFT



BORDEAUX

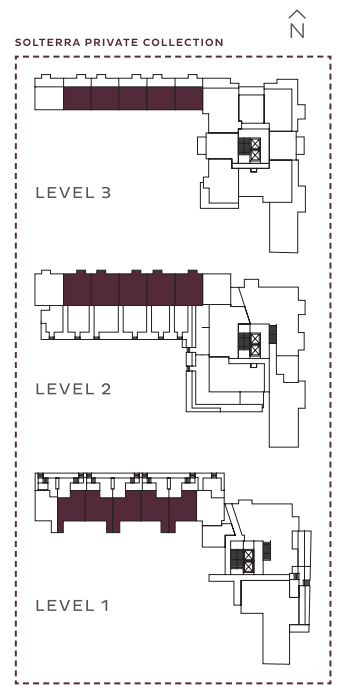
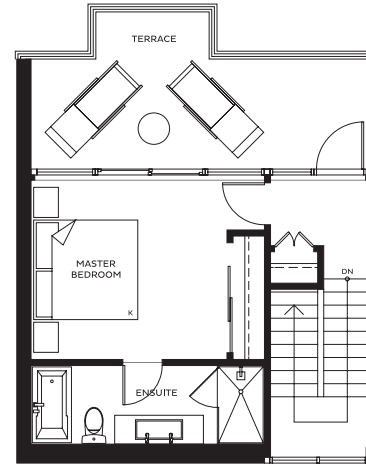
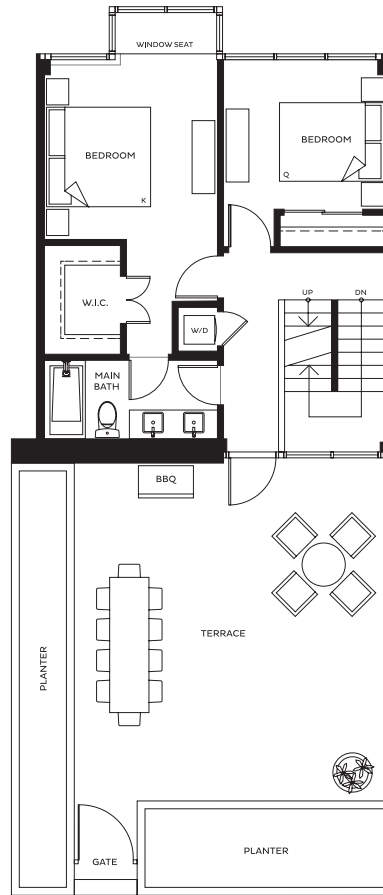
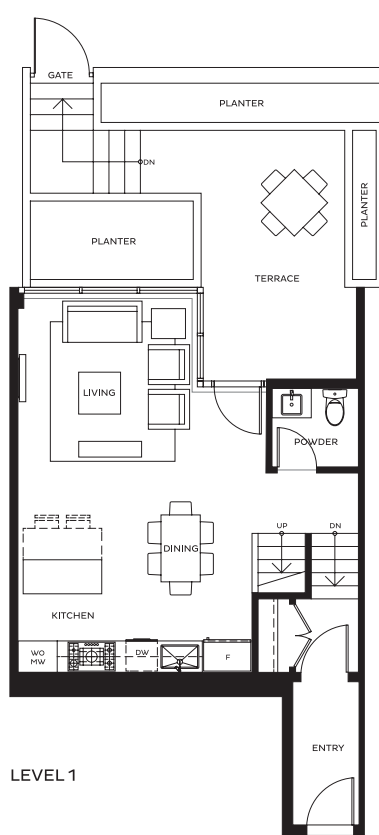
LUXURY LIVING

LACE SERIES

PLAN TH2

THREE BEDROOM, TWO AND A HALF BATH

INDOOR 1,587 SQFT
 OUTDOOR 737 SQFT
 TOTAL 2,324 SQFT



The developer reserves the right to make minor modifications or substitutes to building design, specifications, and floor plans should they be necessary to maintain the high standards of this community. Square footages are based on surveyors measurements and are approximate. E.&O.E. Solterra (Bordeaux 2) Limited Partnership, February 28, 2018.

BORDEAUX

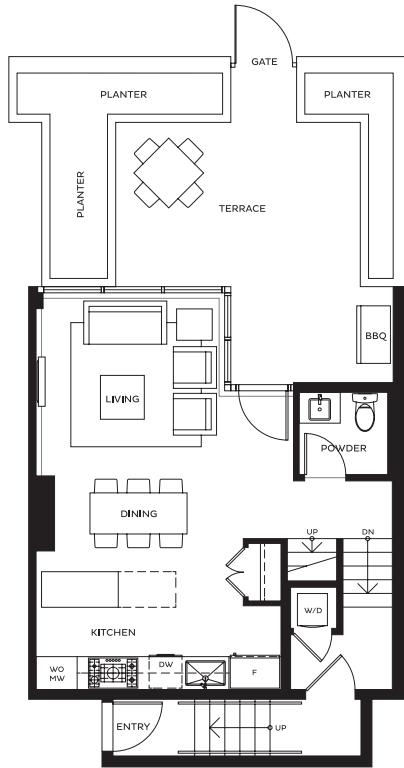
LUXURY LIVING

LACE SERIES

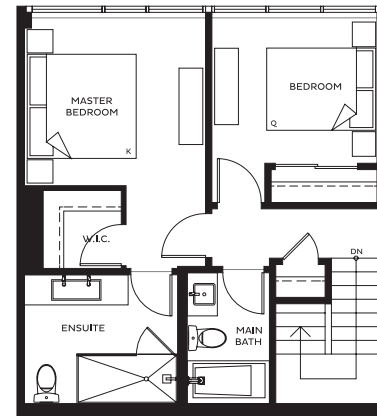
PLAN TH3

TWO BEDROOM, TWO AND A HALF BATH

INDOOR 1,131 SQFT
 OUTDOOR 207 SQFT
 TOTAL 1,338 SQFT



LEVEL 1



LEVEL 2

