

BORDEAUX

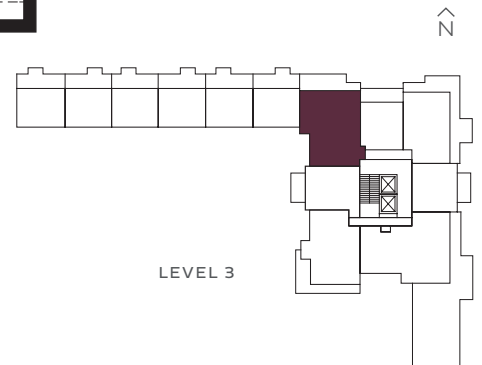
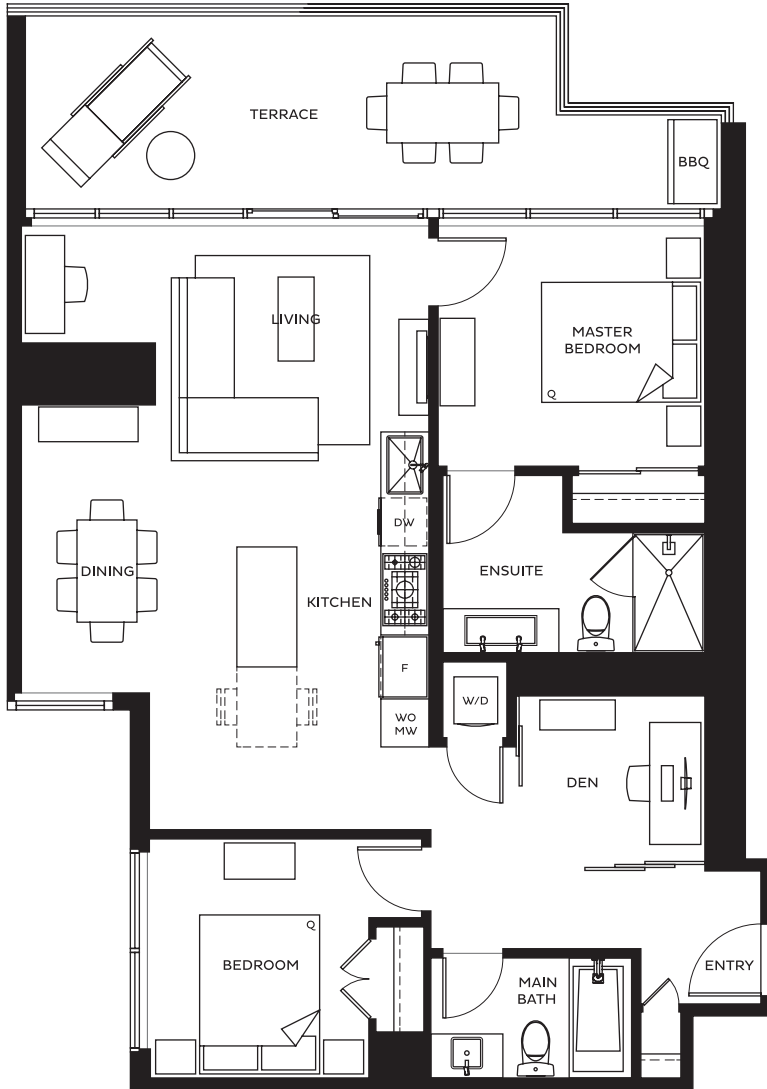
LUXURY LIVING

CASHMERE SERIES

PLAN D

TWO BEDROOM + DEN, TWO BATH

INDOOR 1,020 SQFT
OUTDOOR 221 SQFT
TOTAL 1,241 SQFT



FR - Fritted Glass | SP - Spandrel Glass

The developer reserves the right to make minor modifications or substitutes to building design, specifications, and floor plans should they be necessary to maintain the high standards of this community. Homes with terraces have interior steps at access points leading out to exterior balconies. Square footages are based on architectural measurements and are approximate. E.&O.E. Solterra (Bordeaux 2) Limited Partnership, February 28, 2018.

solterra

BORDEAUX

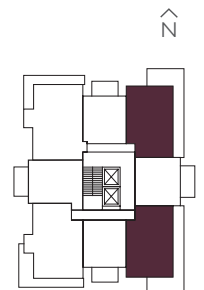
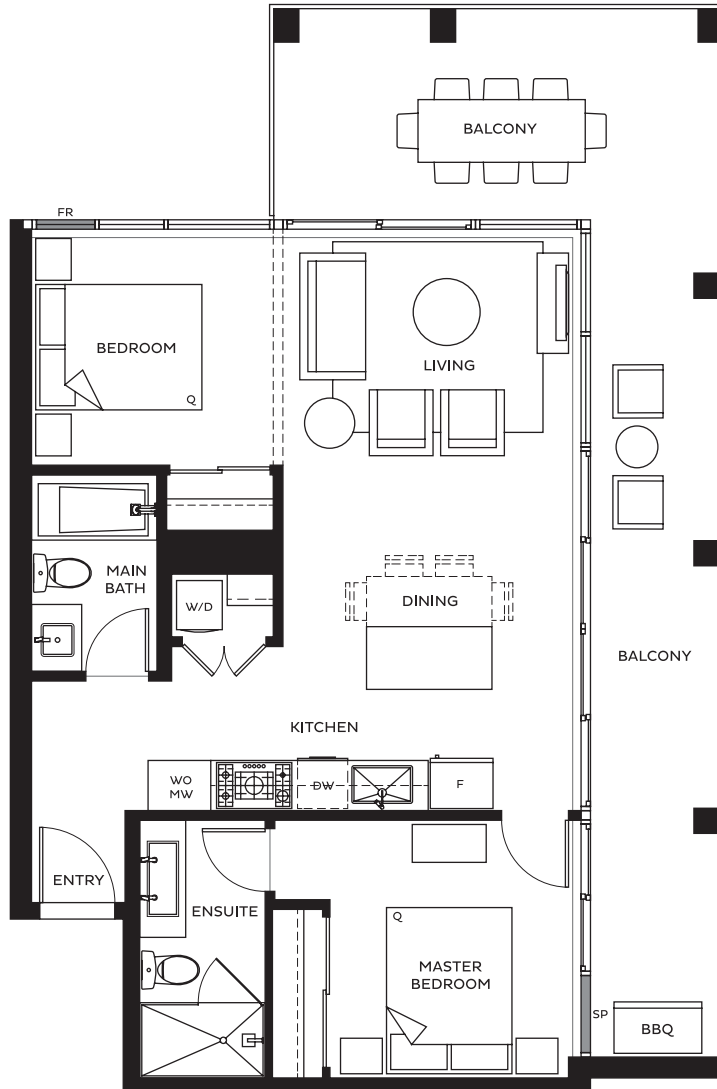
LUXURY LIVING

CASHMERE SERIES

PLAN E

TWO BEDROOM, TWO BATH

INDOOR 758 SQFT
OUTDOOR 327 SQFT
TOTAL 1,085 SQFT



LEVELS 4-16

FR - Fritted Glass | SP - Spandrel Glass

The developer reserves the right to make minor modifications or substitutes to building design, specifications, and floor plans should they be necessary to maintain the high standards of this community. Homes with terraces have interior steps at access points leading out to exterior balconies. Square footages are based on architectural measurements and are approximate. E.&O.E. Solterra (Bordeaux 2) Limited Partnership, February 28, 2018.

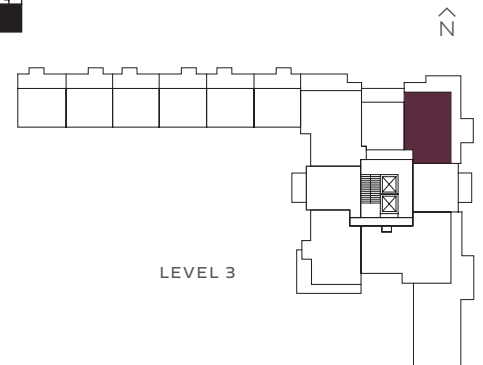
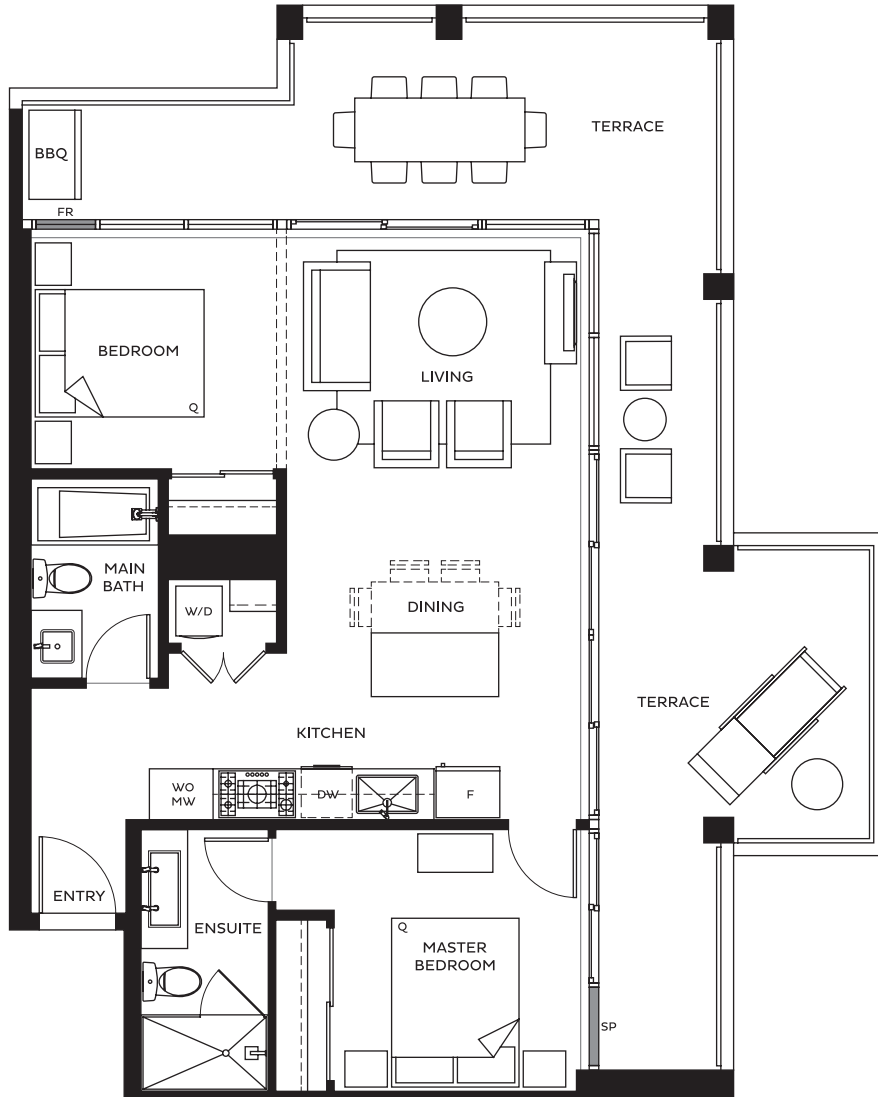
solterra

CASHMERE SERIES

PLAN E2

TWO BEDROOM, TWO BATH

INDOOR 757 SQFT
 OUTDOOR 455 SQFT
 TOTAL 1,212 SQFT



FR - Fritted Glass | SP - Spandrel Glass

The developer reserves the right to make minor modifications or substitutes to building design, specifications, and floor plans should they be necessary to maintain the high standards of this community. Homes with terraces have interior steps at access points leading out to exterior balconies. Square footages are based on architectural measurements and are approximate. E.&O.E. Solterra (Bordeaux 2) Limited Partnership, February 28, 2018.

BORDEAUX

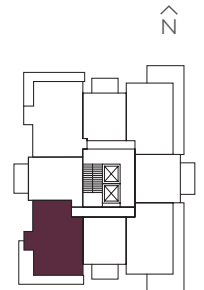
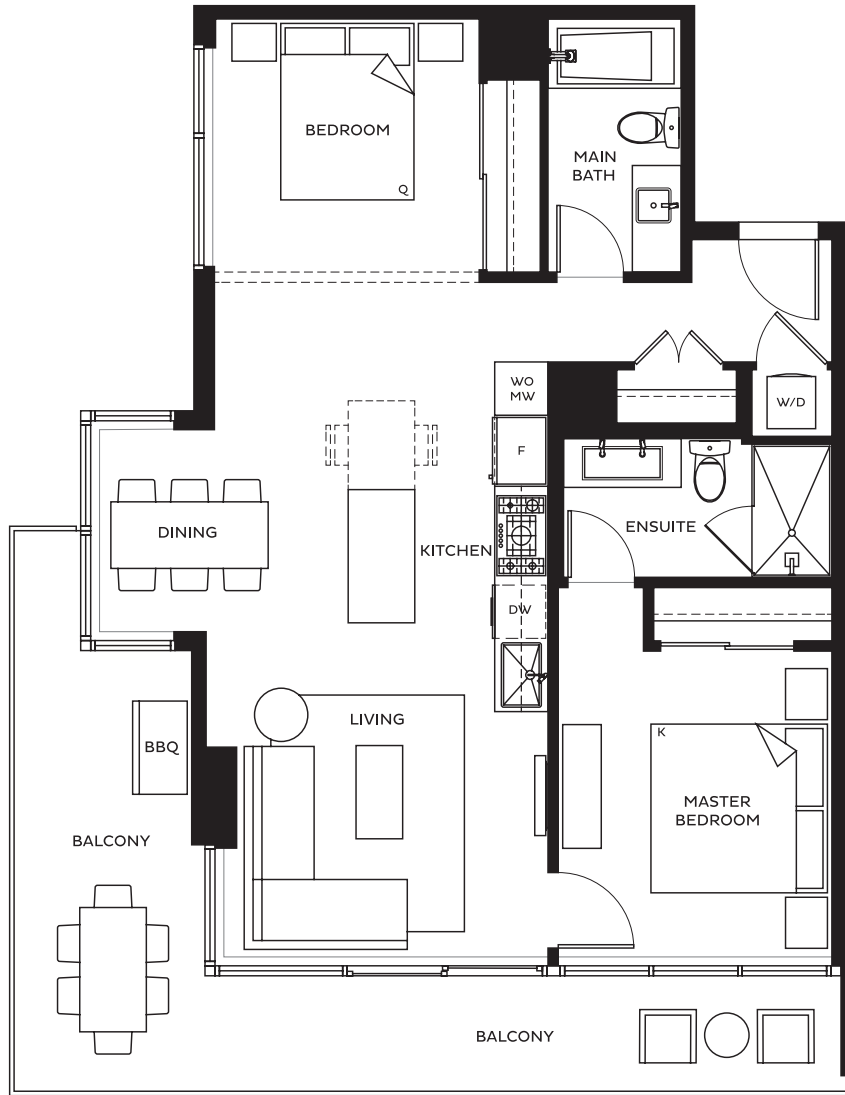
LUXURY LIVING

CASHMERE SERIES

PLAN F

TWO BEDROOM, TWO BATH

INDOOR 887 SQFT
OUTDOOR 226 SQFT
TOTAL 1,113 SQFT



LEVELS 4-16

FR - Fritted Glass | SP - Spandrel Glass

The developer reserves the right to make minor modifications or substitutes to building design, specifications, and floor plans should they be necessary to maintain the high standards of this community. Homes with terraces have interior steps at access points leading out to exterior balconies. Square footages are based on architectural measurements and are approximate. E.&O.E. Solterra (Bordeaux 2) Limited Partnership, February 28, 2018.

solterra

BORDEAUX

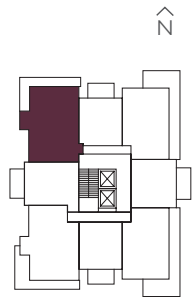
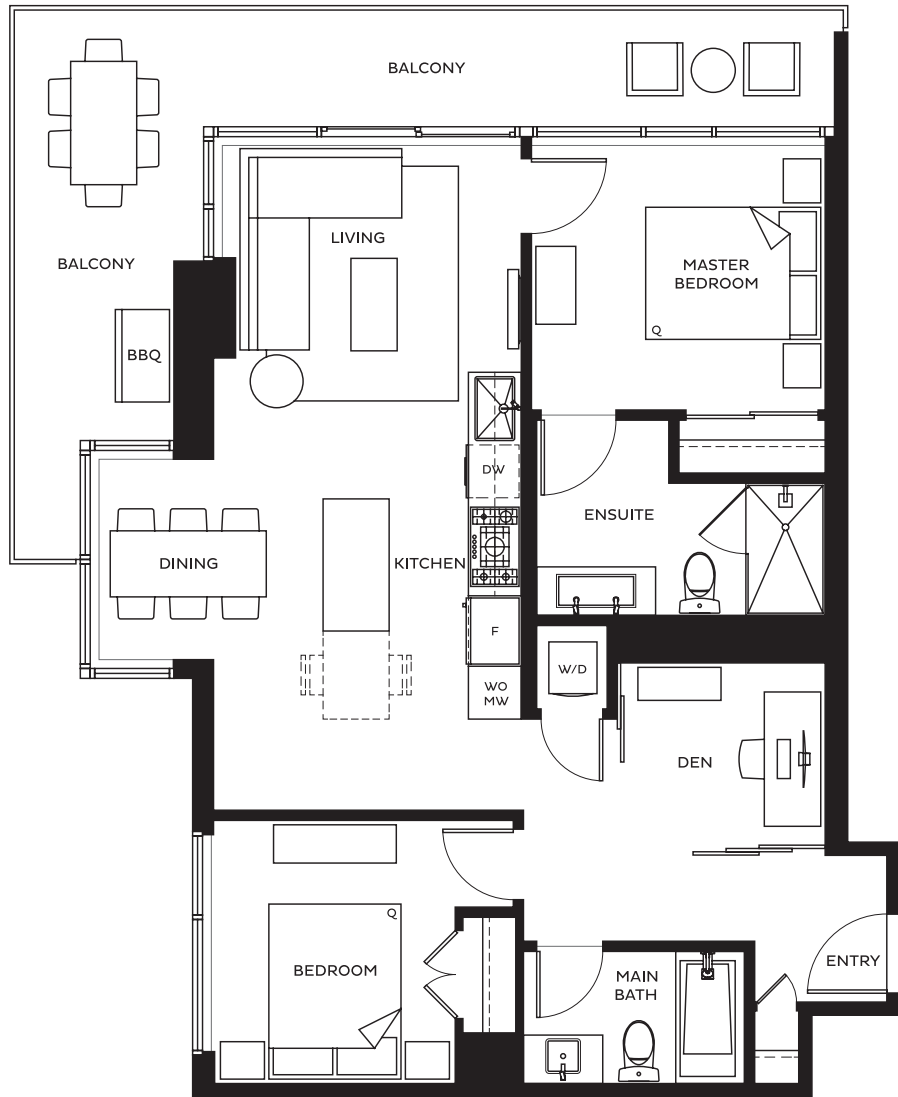
LUXURY LIVING

CASHMERE SERIES

PLAN G

TWO BEDROOM + DEN, TWO BATH

INDOOR 956 SQFT
 OUTDOOR 227 SQFT
 TOTAL 1,183 SQFT



LEVELS 4-16

FR - Fritted Glass | SP - Spandrel Glass

The developer reserves the right to make minor modifications or substitutes to building design, specifications, and floor plans should they be necessary to maintain the high standards of this community. Homes with terraces have interior steps at access points leading out to exterior balconies. Square footages are based on architectural measurements and are approximate. E.&O.E. Solterra (Bordeaux 2) Limited Partnership, February 28, 2018.

solterra

BORDEAUX

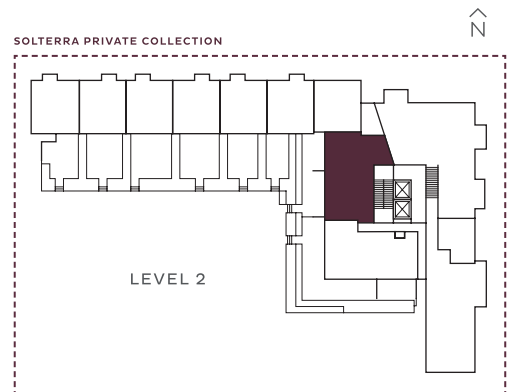
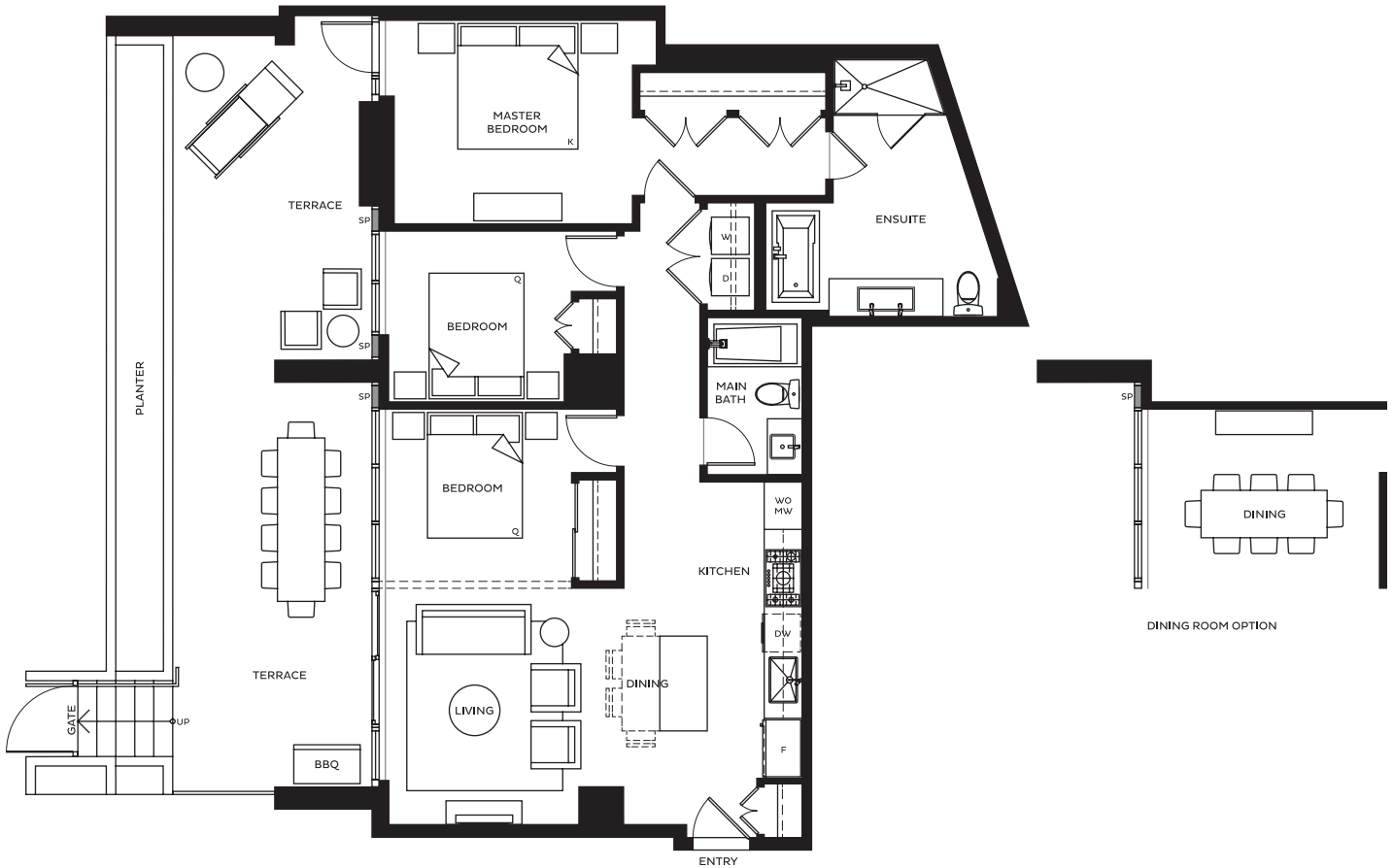
LUXURY LIVING

SILK SERIES

PLAN N

THREE BEDROOM, TWO BATH

INDOOR 1,166 SQFT
 OUTDOOR 413 SQFT
 TOTAL 1,579 SQFT



FR - Fritted Glass | SP - Spandrel Glass

The developer reserves the right to make minor modifications or substitutes to building design, specifications, and floor plans should they be necessary to maintain the high standards of this community. Unit will have a three foot wide entry door. Homes with terraces have interior steps at access points leading out to exterior balconies. Square footages are based on architectural measurements and are approximate. E.&O.E. Solterra (Bordeaux 2) Limited Partnership, February 28, 2018.

solterra

BORDEAUX

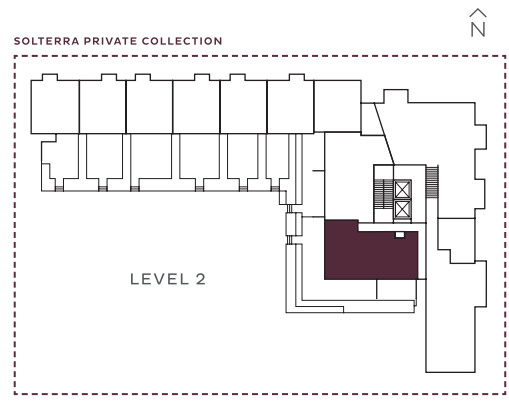
LUXURY LIVING

SILK SERIES

PLAN P

THREE BEDROOM, TWO BATH

INDOOR 1,121 SQFT
 OUTDOOR 843 SQFT
 TOTAL 1,964 SQFT



FR - Fritted Glass | SP - Spandrel Glass

The developer reserves the right to make minor modifications or substitutes to building design, specifications, and floor plans should they be necessary to maintain the high standards of this community. Unit will have a three foot wide entry door. Homes with terraces have interior steps at access points leading out to exterior balconies. Square footages are based on architectural measurements and are approximate. E.&O.E. Solterra (Bordeaux 2) Limited Partnership, February 28, 2018.

solterra